

Tatts Lotto POS Barcodes

This document outlines the procedures to enable the scanning of Tatts Barcodes, including pay-out barcodes and also tickets paid using the 'Digital Wallet' system in PosBrowser. Below is an example of the Tatts POS barcode.



The barcode can be broken up into four sections:

- 02 – Identifies the barcode as a price-embedded barcode
- 87401 – Is a product identification code
- 01835 – Is the price in cents. In this case, the price is \$18.35
- 7 – Is a barcode check digit and does not affect the price.

Step 1: Turn on the Scales Feature and Set the Pay-out Codes

- Go to System Maintenance
- Go to System Setup Values
- Click Edit
- On the Register tab scroll down to the Operational Options sub-heading
- Change the "Enable Scales Barcode usage feature" option to YES
- Set the Lotto Scanned payout ScalesID (1) value to 87440 (see below)
- Set the Lotto Scanned payout ScalesID (2) value to 87441 (see below)
- Click Save

Hide receipt printer message		
Hide Purchases With/Without GST message on receipt	No	Local
Lotto scanned payout ScalesID (1)	87440	Local
Lotto scanned payout ScalesID (2)	87441	Local
Lotto scanned payout ScalesID (3)		Local
Merge lines (sum quantities) for same products being sold	No	Local



Step 2: Add a stock item to associate with the barcode

- Create a stock item by using the Quick Add option or by clicking NEW in Stock Maintenance and filling out the details. Call this item “Saturday Lotto” or something similar.

Note: If you do not have Lotto / Tatts setup as a supplier you will need to do this first as well as setup Dissection/Family/Classes. It is also advised that you assign the new items to your LOTTO SALES dissection.

- Make sure you generate a house barcode for the item (The wand in ‘quick add’ or F8 using the ‘NEW’ button) and hit Save.
- Whilst still in Stock Maintenance, go to the “Misc” tab and click Edit
- Enter the lotto Scales ID into the “Scales ID Number” field. In the case of the above item – 87401
- Enter the lotto Pre-Paid Scales ID into the “Pre-Paid Scales ID” field. In the case of the above item – 87461
- Click SAVE
- Repeat this process for all of the different lotto products (see table below for a complete list of codes)

The screenshot shows the 'Stock Maintenance' window with the 'General' tab selected. The 'This New Item is of Stock Type' is set to 'General'. The 'Description' is 'Saturday Lotto'. The 'Main Supplier' is 'NSW LOTTERIES'. The 'Product Code' is '87401'. The 'Pack Size (Buy)' is '1'. The 'Serialised' checkbox is unchecked. The 'Dissection' is 'LOTTO\LOTTERY [4F] - 4F', the 'Family' is 'LOTTO\LOTTERY - LO', and the 'Class' is 'LOTTO\LOTTERY - LO'. The 'Label Style' is '[Not Applicable]'. The 'Barcode' is '2990060005467'. The 'Selling Pack Size' is '1'. The 'Retail Price' is '\$0.00'. The 'Business Price' is empty. The 'Return Frequency' is '[Not Applicable]'. The 'Automatic Reorder Method' is 'Focus Method'. The 'Min Reorder Qty' is '1'. The 'Min' and 'Max' fields are empty. The 'Wholesale Cost per Pack Size' is empty. The 'Discountable' checkbox is checked. The 'Dont Print Labels' checkbox is checked. The 'Security Lbl' is 'No'. The 'GST Category' is 'GST Exempt' and the 'GST Rate' is '0.0000%'. The 'Sales Price' and 'PLU' checkboxes are unchecked. The 'Manufacturer' and 'Categories' checkboxes are unchecked. The 'Print Normal Label' checkbox is checked. The 'Associated Category' is '[Not applicable]'. The 'Quick Add' button is highlighted in yellow. The 'Save' and 'Cancel' buttons are visible at the bottom right.

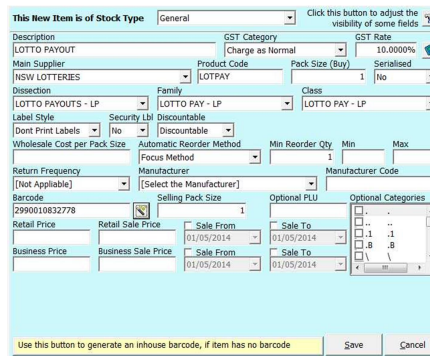
Lotto Product Codes

Below are the codes that we have been given for each lotto product. The Pre-Paid Scales ID is used for purchases paid by the Digital Wallet system. Some products may not be applicable in your state, so please only add stock items for the products that you need.

Product	Scales ID number	Pre-Paid Scales ID
Syndicate Share	87400	87460
Saturday Lotto	87401	87461
Oz Lotto	87402	87462
Powerball	87452	87463
Super66	87404	87464
Monday / Wednesday Lotto	87406	87466
Lucky Lotto \$2	87407	87467
Lucky Lotto \$5	87408	87468
Lotto Strike	87409	87469
Keno	87411	87471
Keno Coin Toss	87412	N/A
Set For Life	87413	87473
Instant Scratch –Its Sales	87430	N/A
Card Renewal	87421	N/A
Lotto Payout	87440	N/A
Scratchie Payout	87441	N/A
Weekly Windfall	87422	87482
Cancel Sale	87425	87485

Step 3: Add Payout Barcodes

- Create a stock item by using the Quick Add option or by clicking NEW in Stock Maintenance and filling out the details. Call this item “Lotto Payout” or something similar.
- **Note:** Ensure you change the dissection to your Lotto Payout dissection.
- Generate a house barcode for the item (The wand in quick add or F8 using the NEW button) and hit Save.
- Whilst still in Stock Maintenance, go to the “Misc” tab and click Edit
- Enter the lotto product code into the “Scales ID Number” field. In this case – 87440
- Click SAVE
- Repeat this process to add the Scratchie Payout and Membership Reimbursement barcodes



Once the Cash Register has been restarted the Lotto Barcodes will scan in PosBrowser.

If you require further assistance with this document please contact the POS Solutions Helpdesk.

Phone: (03) 9597 7222

Email: support@posolutions.com.au